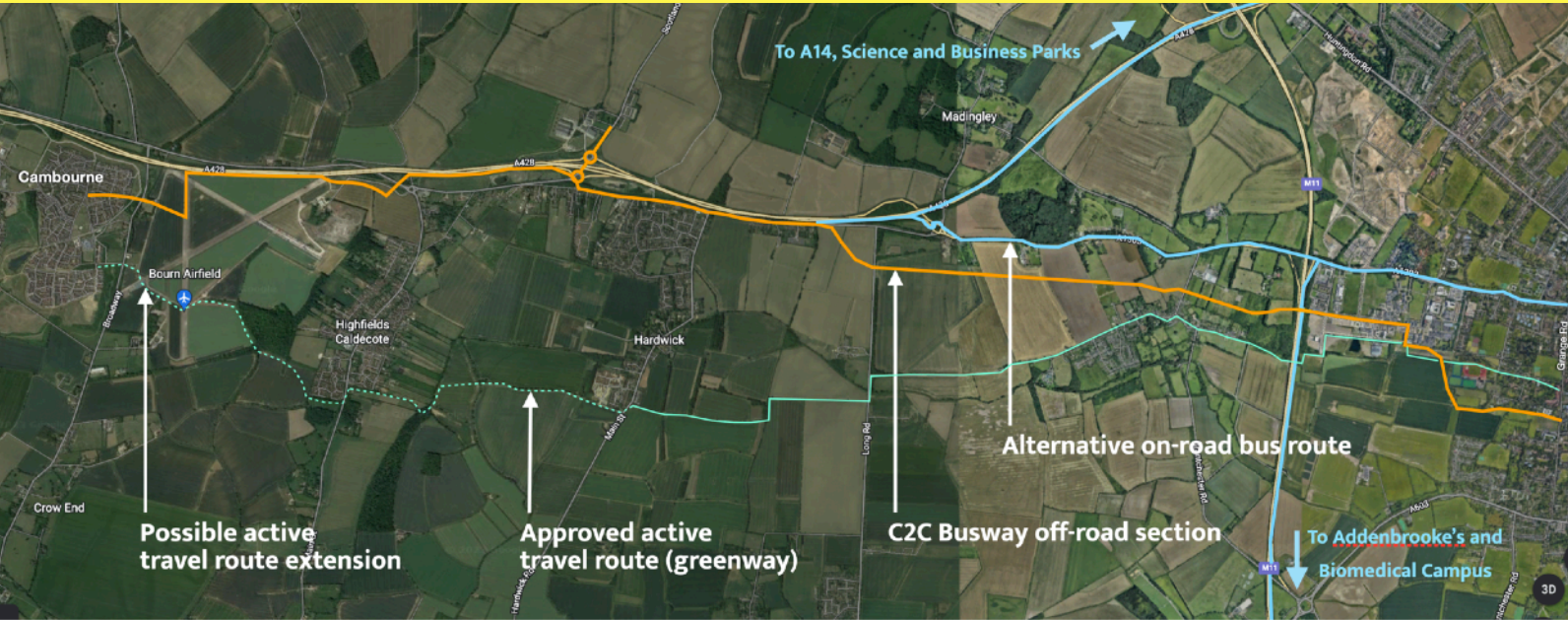


SAVE THE TREES ON C2C



The Greater Cambridge Partnership (GCP) want to build an off-road busway from Cambourne to Cambridge (C2C) at a cost of at least **£160 million***. Their proposed route cuts through Green Belt land and Coton Orchard. It will irreversibly damage landscape, views and habitats.



* 2018 GCP costing. Current estimate based on inflation is at least £220M